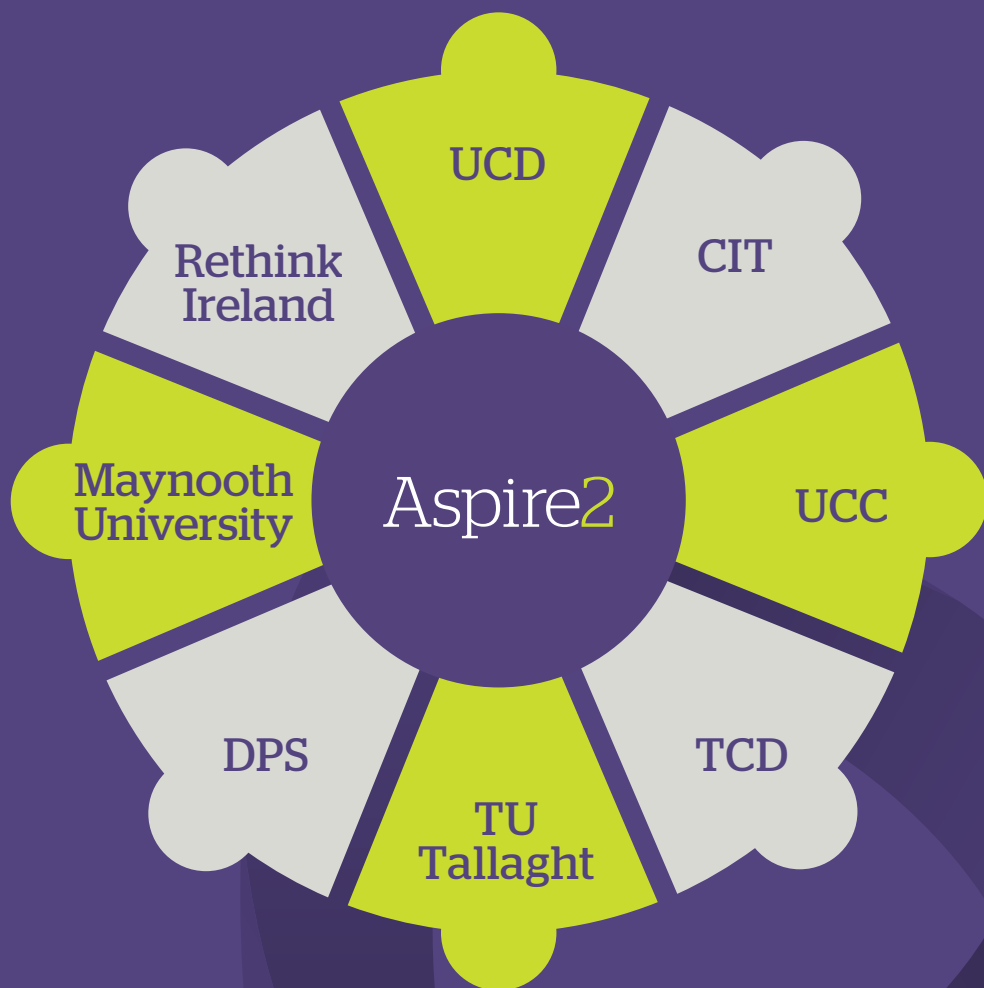


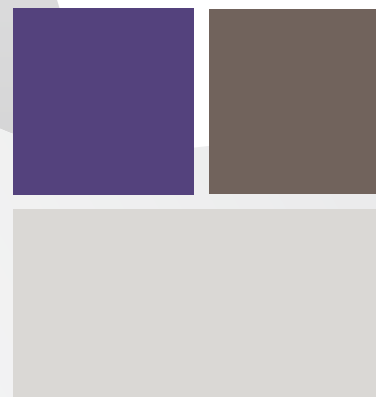
Our Partners



For further information contact
Janice McGarry
Aspire2 Project Manager
P 085 181 0931
E janice.mcgarry@dpsgroupglobal.com

Aspire2

Initiated by  DPS



What is Aspire2?

Aspire2 was initiated in 2015 by DPS to support students from four DEIS Schools in Dublin and Cork to achieve the best Leaving Cert Results possible and increase the percentage of students progressing from these schools to University, Further education and Apprenticeships. Since then the project has expanded its reach and we now have ten participating schools.

Dublin

St. Dominic's College, Ballyfermot
Kylemore College, Ballyfermot
Rosary College, Crumlin
Mercy Secondary School, Inchicore
St. Mary's Holy Faith, Killester

Cork

St. Aidan's Community College, Dublin Hill
St. Patrick's College, Gardeners Hill
St. Vincent's Secondary School, St. Marys Road
Presentation Secondary School, Ballyphehane
Gaelcholáiste Mhuire (A.G.)

Financial Supports

The programme provides significant financial supports to the eight participating schools to fund a range of initiatives that reflect the vision of the programme, such as additional tuition, study supports, personal development and motivational workshops, cultural and extra-curricular activities.

Student Mentoring

Aspire2 mentoring programme takes form in small groups to supports students directly to identify their learning needs, develop study skills, set achievable goals and prepare for exams.

Youth Advisory Panel

Aspire2 encourages student participation in the programme. Each school has a Youth Advisory Panel. The advisory panels are supported to consult with their peers to identify where support is needed most and influence the programmes development.

Parents Forum

Our parent's forum gives parents/guardians an opportunity to get involved in their child's education. They can learn about exam supports, updated progression routes, grant schemes and establish links with university supports.

Aspire2 Alumni

Past students from the Youth Advisory Panels have stayed involved with the programme. They are advocates for Aspire2, who show leadership and peer support to students currently involved in the programme. In response to Covid 19 our Alumni set up a new "AweZoom Grinds Initiative" this initiative was set up by past pupils for Leaving Cert students. The project aims to provide peer support through online Grinds and mentoring support to students currently sitting Leaving Cert.

“

Aspire2 helped me to grow in confidence and follow my dreams

”

“

Aspire2 Alumni supported me to develop my skills for the future

”